

Sensor technologies → Proximity sensors

Sensor, Series ST6

► 6 mm groove ► with cable ► Plug, M8, 3-pin



00112027\_3

Certificates	UL (Underwriters Laboratories)
Ambient temperature min./max.	-25 °C / +70 °C
Protection class	IP 65, IP 67
Switching point precision [mm]	±0,1
DC operating voltage min./max.	10 V
Switching capacity	3 W / 3 VA
LED status display	Yellow
Vibration resistance	10 - 55 Hz, 1 mm
Shock resistance	30 g / 11 ms

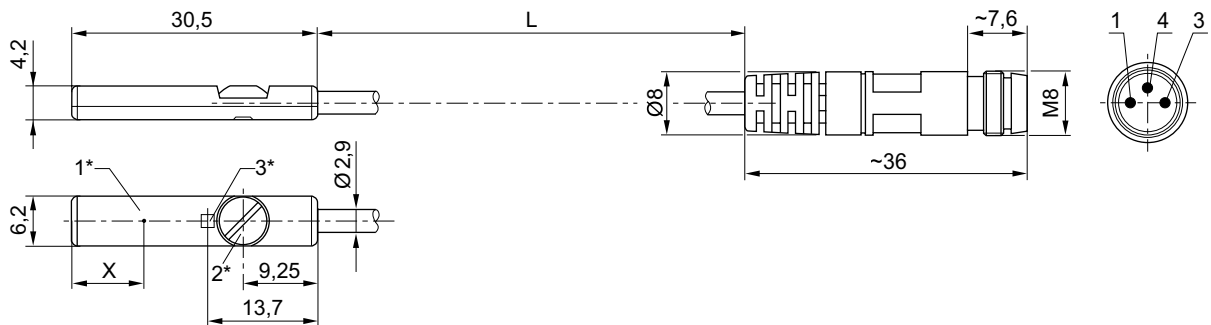
Materials:	
Housing	Polyamide
Cable sheath	Polyurethane

	Type of contact	Cable length	Operational voltage AC min./max.	DC switching current, max.	AC switching current, max.	Voltage drop U at I <sub>max</sub>	Protective resistor for reed	Part No.
		[m]	[V]	[A]	[A]	[V]	[Ω]	
	Reed	0.3	10 / 30	0,13	0,13	I*Rs	15	<b>0830100488</b>
	electronic PNP	0.3	-	0.1	-	≤ 2,5	-	<b>0830100489</b>
	electronic NPN	0.3	-	0.1	-	≤ 2,5	-	<b>0830100430</b>

Part No.	Max. switching frequency	Operating current, not switched	Operating current, switched	Note
	[kHz]	[mA]	[mA]	
<b>0830100488</b>	< 0,3	-	< 10 mA	1)
<b>0830100489</b>	< 1,0	< 20 mA	< 30 mA	2)
<b>0830100430</b>	< 1,0	< 20 mA	< 30 mA	2)

1) Protected against polarity reversal  
 2) short circuit resistant; Protected against polarity reversal  
 interfaces: Plug; M8; 3-pin

Dimensions



00111942\_a

1\* = switching point 2\* = clamping screw 3\* = LED  
 L = cable length  
 X = electronic: 6 mm, Reed: 10 mm  
 Pin assignment: 1 = (+), 3 = (-), 4 = (OUT), EN 60947-5-2:1998