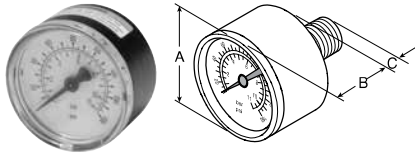
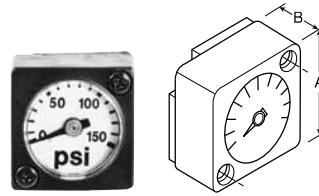


Accessories – Regulators



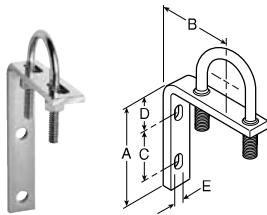
Gauges



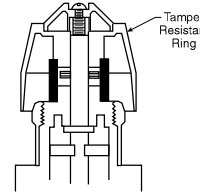
Flush Mount Gauge
08 Series



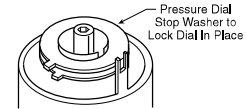
Digital Gauge



Wall Mounting Bracket
U-Bolt Pipe Clamp
GRP-95-734



RPA-95-006



RRP-95-585

Tamper Resistant Kit

Dimensions Inches (mm)

Accessories		A	B	C	D	E
Gauges, 1/4 Port, CBM	K4515N14030 (0 to 30 PSIG)	1.64 (41.6)	1.09 (27.6)	.80 (20)	—	—
	K4515N14060 (0 to 60 PSIG)					
	K4515N14160 (0 to 160 PSIG)					
	K4515N14300 (0 to 300 PSIG)					
	K4515G14030 (0 to 2.0 bar)					
	K4515G14060 (0 to 4.2 bar)					
	K4515G14160 (0 to 11 bar)					
K4515G14290 (0 to 20 bar)						
Gauges, 1/8 Port, CBM	K4515N18030 (0 to 30 PSIG)	1.64 (41.6)	1.09 (27.6)	.80 (20)	—	—
	K4515N18060 (0 to 60 PSIG)					
	K4515N18160 (0 to 160 PSIG)					
Gauges, 1/4 Port, CBM	K4520N18030 (0 to 30 PSIG)	1.96 (49.8)	1.08 (27)	.91 (23)	—	—
	K4520N14030 (0 to 30 PSIG)					
	K4520N14060 (0 to 60 PSIG)					
	K4520N14160 (0 to 160 PSIG)					
	K4520N14300 (0 to 300 PSIG)					
Gauges, 1/4 Port, CBM	K4520N14060W (0 to 60 PSIG)	1.96 (49.8)	1.08 (27)	.91 (23)	—	—
	K4520N14160W (0 to 160 PSIG)					
	K4520N14300W (0 to 300 PSIG)					
Flush Mount Series Gauges	K4511SCR150 (0 to 150 PSIG)	1.06 (26.9)	.63 (16)	—	—	—
	K4511SCR060 (0 to 60 PSIG)					
	K4511SCR11B (0 to 11 bar)					
Round Digital Gauge, 1/4 Port	K4517N14160D (0 to 160 PSIG)	1-3/4" Diameter				
Tamper Resistant Kit	RPA-95-006	—	—	—	—	—
	RRP-95-585	—	—	—	—	—
Wall Mtg. Bracket U-Bolt Pipe Clamp	GRP-95-734	3.34 (85)	2.76 (70)	1.62 (41)	1.10 (28)	0.30 (7.6)

D

Accessories & Repair Kits