

Identification and Type Code

3.4 Type Code MSM041



The following figure illustrates the basic structure of the type code. Our sales representative will help you with the current status of available versions.

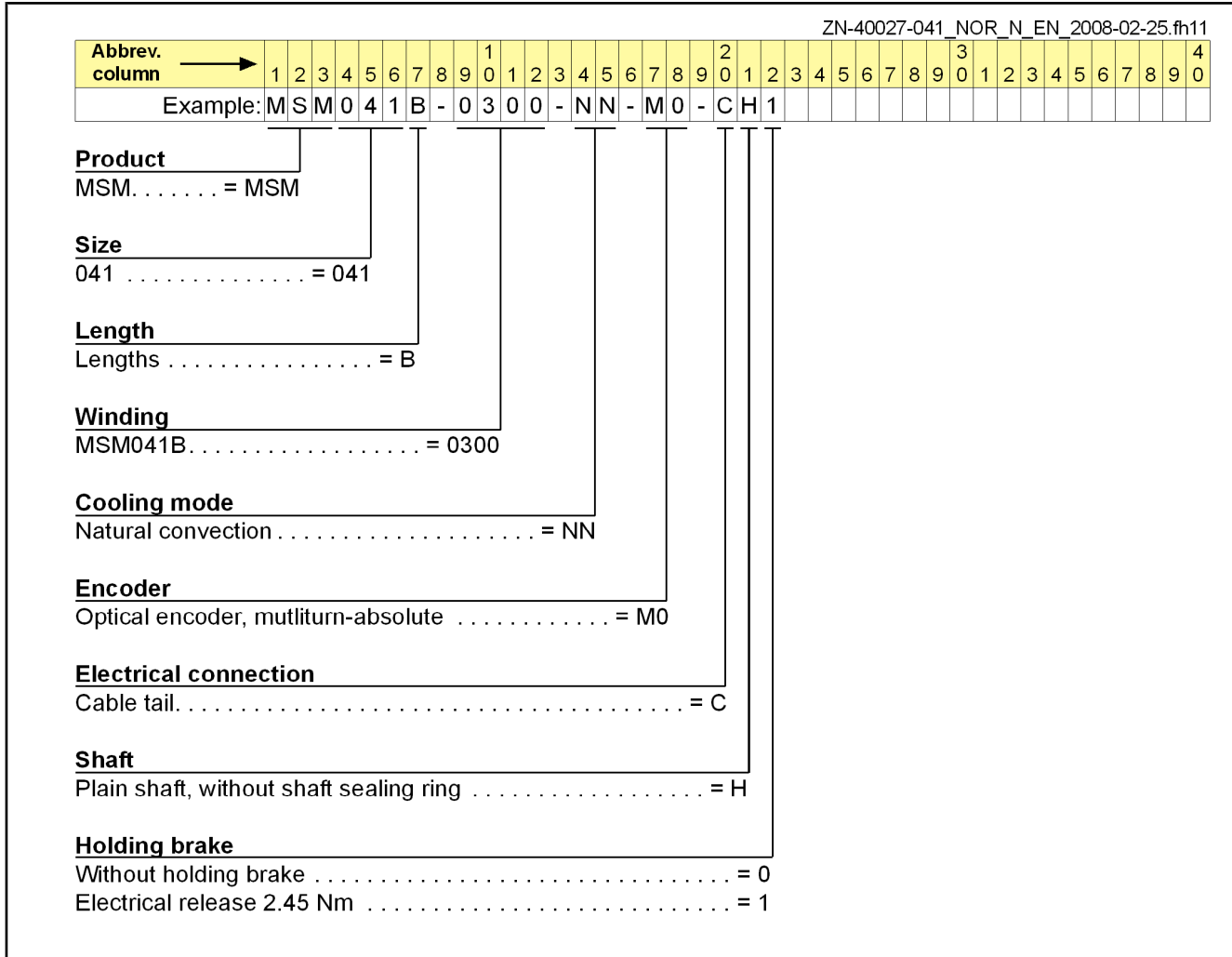


Fig.3-4: MSM041

Technical Data

4.4 MSM041**4.4.1 Technical Data MSM041**

Description	Symbol	Unit	MSM041B-0300-NN preliminary
Cooling type according to EN 60034-6		-	IC00
Listing according to UL standard (UL)		-	UL 1004; ANSI UL 840
Listing according to CSA standard (UL)		-	CSA-C22.2 No. 100
UL files (UL)			E223837
Electrical characteristic values			
Continuous torque at standstill 60 K	$M_{0,60}$	Nm	2.40
Continuous current at standstill 60 K	$I_{0,60(rms)}$	A	4.00
Maximum current	$I_{max(rms)}$	A	12.00
Maximum torque	M_{max}	Nm	7.10
Torque constant at 20 °C ¹⁾	$K_{M,N}$	Nm/A	0.64
Constant voltage at 20 °C ²⁾	$K_{EMK,1000}$	V/min ⁻¹	37.6
Winding resistance at 20 °C	R_{12}	ohm	1.50
Winding inductance	L_{12}	mH	6.700
Leakage capacitance of the component	C_{ab}	nF	1.3
Number of pole pairs	p	-	4
Mechanical characteristic values			
Rotor inertia	J_{rot}	kg*m ²	0.00009
Power wire cross section	A_{60}	mm ²	0.75
Thermal time constant	T_{th}	min	tdb
Maximum speed	n_{max}	min ⁻¹	4,500
Mass ³⁾	m	kg	2.3 (3.1)
Storage and transport temperature	T_L	°C	-20 ... +60
Ambient temperature during operation	T_{um}	°C	0 ... 40
Installation altitude		m	0 ... 1,000
Insulation class according to DIN EN 60034-1	---	-	130 (B)

Last modification: 2008-11-05

Technical Data

Description	Symbol	Unit	MSM041B-0300-NN preliminary
Degree of protection according to IEC60529	---	-	IP54
Sound pressure level	L _P	dB[A]	tbd

Last modification: 2008-11-05

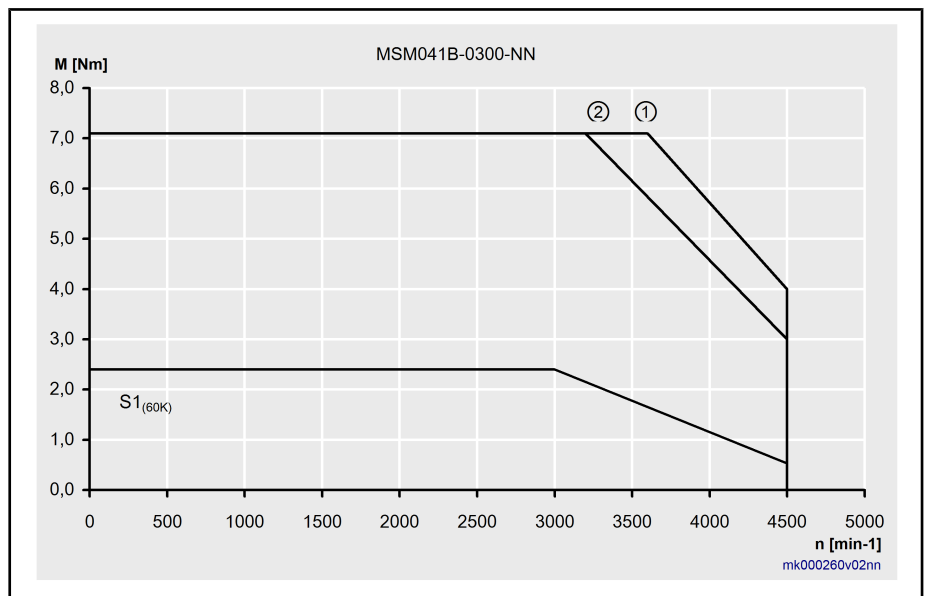
1) 2) Manufacturing tolerance ±5%
 3) (...) Values for motors with holding brake, sorted (holding brake 1, holding brake 2 ...)
Fig.4-13: MSM041B-0300-NN

Description	Symbol	Unit	Holding brake 1 (MSM041)
Holding torque	M ₄	Nm	2.45
Rated voltage	U _N	V	24 ± 1.2
Rated current	I _N	A	0.42
Clamping delay	t ₁	ms	70
Release delay	t ₂	ms	20
Inertia brake	J _{rot}	kg*m ²	0.0000075

Last modification: 2008-10-16

Fig.4-14: MSM041 Holding Brakes - Technical Data (Optional)

Status of the Characteristic Curve: preliminary

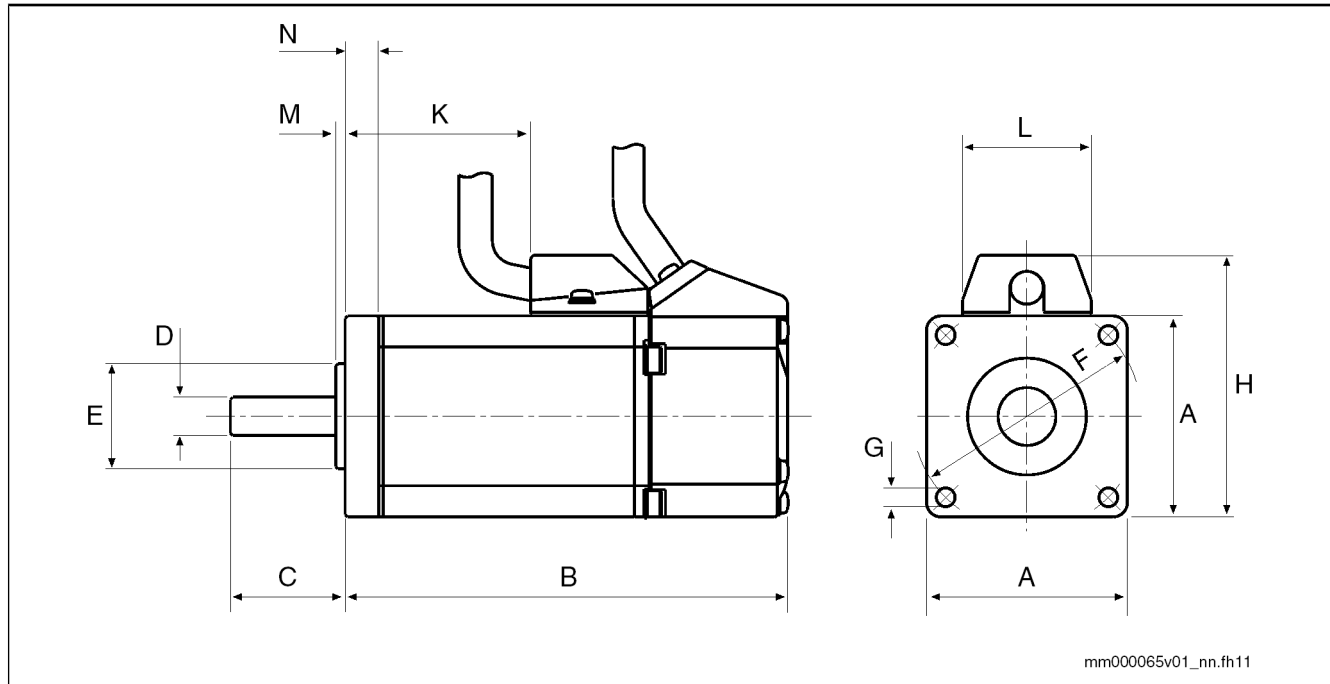


- ① M_{max} IndraDrive Cs, supply 3 * 230 V
- ② M_{max} IndraDrive Cs, supply 3 * 200 V -10%

Fig.4-15: Torque-Speed Characteristic

Technical Data

4.4.2 Dimensions MSM041



Motor	A	B	C	D	E	F	G	H	K	L	M	N
MSM041B-.....CH0	80	112	35	ø19 ^{h6}	ø70 ^{h7}	ø90±0.20	ø6	91	52.2	36	3	6
MSM041B-.....CH1	80	149	35	ø19 ^{h6}	ø70 ^{h7}	ø90±0.20	ø6	91	52.2	36	3	6

Fig.4-16: Dimensions MSM041