

4.2 MSM019

4.2.1 Technical Data MSM019

Description	Symbol	Unit	MSM019A-0300-NN preliminary	MSM019B-0300-NN preliminary
Cooling type according to EN 60034-6		-	IC00	
Listing according to UL standard (UL)		-	UL 1004; ANSI UL 840	
Listing according to CSA standard (UL)		-	CSA-C22.2 No. 100	
UL files (UL)			E223837	
Electrical characteristic values				
Continuous torque at standstill 60 K	M_{0_60}	Nm	0.16	0.32
Continuous current at standstill 60 K	$I_{0_60(rms)}$	A	1.10	
Maximum current	$I_{max(rms)}$	A	3.30	
Maximum torque	M_{max}	Nm	0.48	0.95
Torque constant at 20 °C ¹⁾	K_{M_N}	Nm/A	0.14	0.30
Constant voltage at 20 °C ²⁾	K_{EMK_1000}	V/min ⁻¹	8.6	17.4
Winding resistance at 20 °C	R_{12}	ohm	9.30	13.20
Winding inductance	L_{12}	mH	5.650	9.250
Leakage capacitance of the component	C_{ab}	nF	0.3	0.7
Number of pole pairs	p	-	4	
Mechanical characteristic values				
Rotor inertia	J_{rot}	kg*m ²	0.0000025	0.00001
Power wire cross section	A_{60}	mm ²	0.75	
Thermal time constant	T_{th}	min	tbd	
Maximum speed	n_{max}	min ⁻¹	5,000	
Mass ³⁾	m	kg	0.32 (0.53)	0.47 (0.68)
Storage and transport temperature	T_L	°C	-20 ... +60	
Ambient temperature during operation	T_{um}	°C	0 ... 40	
Installation altitude		m	0 ... 1,000	
Insulation class according to DIN EN 60034-1	---	-	130 (B)	

Last modification: 2008-11-20

Technical Data

Description	Symbol	Unit	MSM019A-0300-NN preliminary	MSM019B-0300-NN preliminary
Degree of protection according to IEC60529	---	-	IP54	
Sound pressure level	L_p	dB[A]	tbd	

Last modification: 2008-11-20

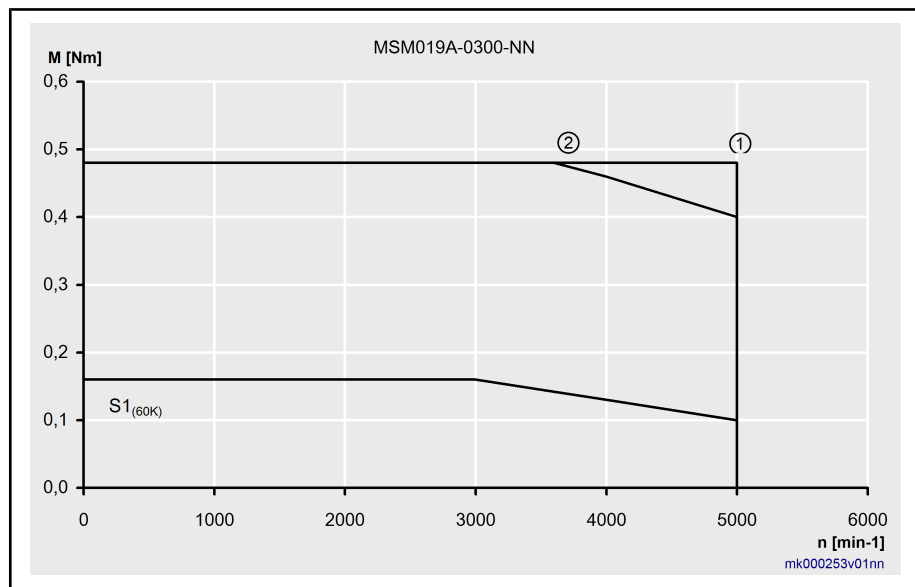
1) 2) Manufacturing tolerance $\pm 5\%$
 3) (...) Values for motors with holding brake, sorted (holding brake 1, holding brake 2 ...)
Fig.4-3: Technical data MSM

Description	Symbol	Unit	Holding brake 1 (MSM019)
Holding torque	M_4	Nm	0.29
Rated voltage	U_N	V	24 ± 1.2
Rated current	I_N	A	0.3
Clamping delay	t_1	ms	35
Release delay	t_2	ms	20
Inertia brake	J_{rot}	kg*m ²	0.0000002

Last modification: 2008-10-16

Fig.4-4: MSM019 Holding Brakes - Technical Data (Optional)

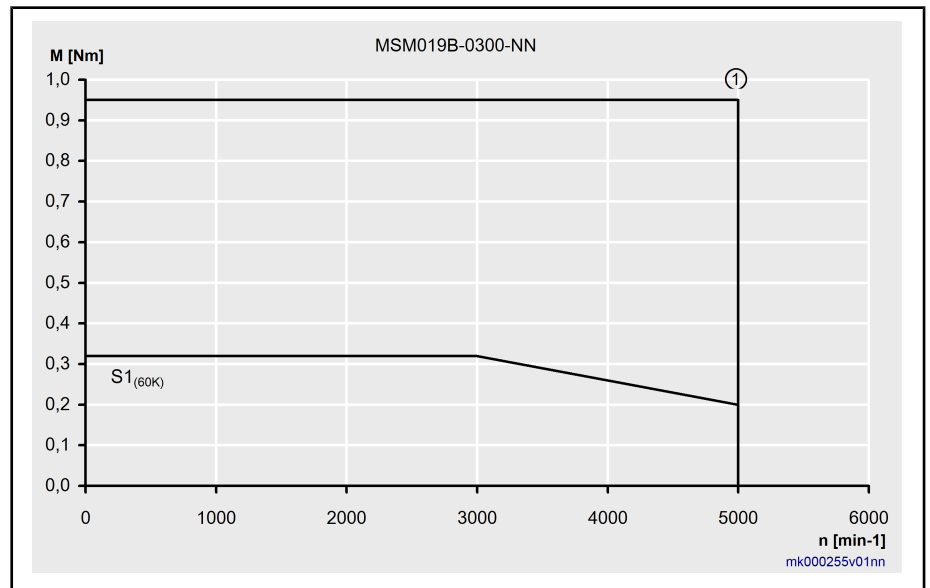
Status of the Characteristic Curve: preliminary



- ① M_{max} IndraDrive Cs, supply 3 * 230 V
- ② M_{max} IndraDrive Cs, supply 3 * 100 V -10%

Fig.4-5: Torque-Speed Characteristic

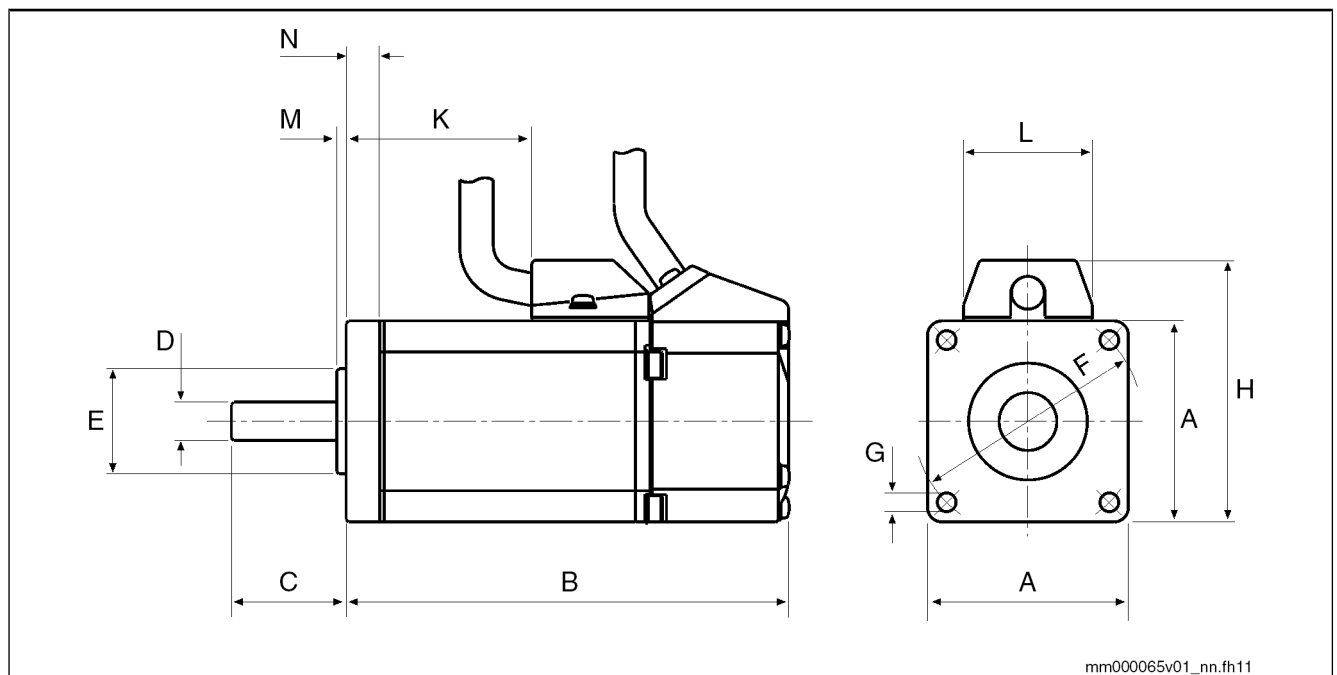
Status of the Characteristic Curve: preliminary



① M_{max} IndraDrive Cs, supply 3 * 230 V

Fig.4-6: Torque-Speed Characteristic

4.2.2 Dimensions MSM019



Motor	A	B	C	D	E	F	G	H	K	L	M	N
MSM019A-...-...CH0	38	72	25	∅8 ^{h6}	∅30 ^{h7}	∅45±0.20	∅3.5	51	20.8	27	3	6
MSM019A-...-...CH1	38	102	25	∅8 ^{h6}	∅30 ^{h7}	∅45±0.20	∅3.5	51	20.8	27	3	6
MSM019B-...-...CH0	38	92	25	∅8 ^{h6}	∅30 ^{h7}	∅45±0.20	∅3.5	51	40.8	27	3	6
MSM019B-...-...CH1	38	122	25	∅8 ^{h6}	∅30 ^{h7}	∅45±0.20	∅3.5	51	40.8	27	3	6

Fig.4-7: Dimensions MSM019