

1) Head 1 2) Head 2 3) Tightening torque



Display/Operation

Data valid	LED yellow
Read/write head	LED yellow
Ready/Error	LED green

Electrical connection

Connection slots	Head 1: Male, 4-pole Head 2: Male, 4-pole
Connector port 01, note type	for all C-3... with female, 4-pin

Electrical data

Current consumption max. at 24 V DC	400 mA
Memory organization	32 × 8 bits
Operating voltage U_b	19.2...28.8 VDC
Residual ripple max.	10 %

Environmental conditions

Ambient temperature	0...60 °C
Protection type IEC 60529	IP54 with connector

General data

Approval/Conformity	CE UL-File E227256, Vol. X1, BIS
---------------------	-------------------------------------

Material

Housing material	ABS
------------------	-----

Mechanical data

Application weight	400.00 g
Dimension	90 x 35 x 145 mm

Output/Interface

Interface	parallel
-----------	----------

Remarks

When installing, the technical standards and regulations of the corresponding countries must be observed.

LF (70/455 kHz)

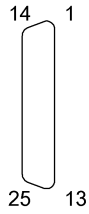
BIS C-6005-027-650-05-ST4

Ordercode: BIS00N7

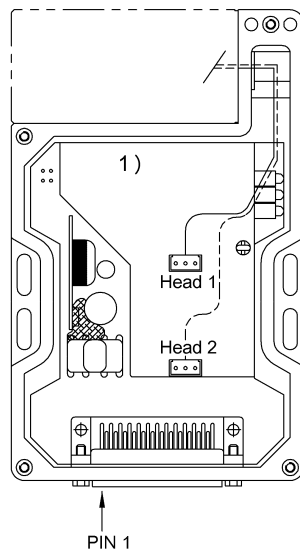
BALLUFF

Connector view

1)		
1 2)	13 +IN 0	14 TXD RS 232
2 COM RS 232	14 TXD RS 232	15 RXD RS 232
3 -VS ₁	16 +VS ₁	16 +VS ₁
4 -VS ₂	17 +VS ₂	17 +VS ₂
5 Out 12	18 Out 11	18 Out 11
6 Out 10	19 Out 9	19 Out 9
7 Out 8	20 Out 7	20 Out 7
8 Out 6	21 Out 5	21 Out 5
9 Out 4	22 Out 3	22 Out 3
10 Out 2	23 Out 1	23 Out 1
11 Out 0	24 +IN 3	24 +IN 3
12 +IN 2	25 +IN 1	25 +IN 1



1) MIN D connector 25-pin 2) Shield



1) Inside view