

- Male M12
- Male RJ45
- straight / straight

General attributes

Area of application	Ethernet
Cable jacket color	teal
Enclosure Type per IEC 60529	IP67 / IP20
Function indicator	No
Trademark	EtherNet/IP

Electrical attributes

Conductor resistance	≤ 26.0 Ω/ 1000 ft
Operating voltage UB max. AC [V]	30.0 V
Operating voltage UB max. DC [V]	42.0 V
Rated current (40°C)	1.5 A
Switching output	No
Transfer impedance	≤ 100 +/- 15 Ω
Work capacity	13.5 pF/ft

Mechanical attributes

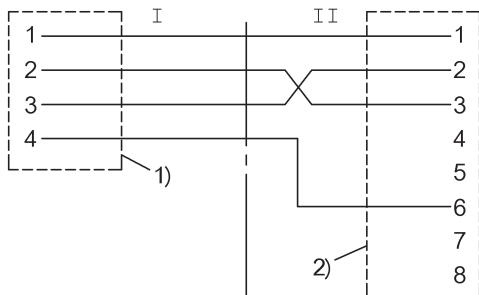
Ambient temp. max. (moving)	75 °C
Ambient temp. min. (moving)	-40 °C
Bending cycles	> 10 Mio.
Bending radius fixed cable	min. 20 x D
Cable diameter D	6.12 +/- 0.25 mm

Cable jacket material	TPE shielded
Cable length L [m]	1.00 m
Conductor cross-section	24 AWG
Conductor structure	2x2 twisted pairs
Connector configuration	straight / straight
Connector type	M12, D-coded

Connector type (Header I)	Male M12
Connector type (Header II)	Male RJ45
Contact material	CuZn / PhBz, Gold plated
Cover nut material	GD-Zn / -
Grip material	TPU / PVC
Number of conductors	4
Stranding	Twisted pair
System	molded / assembled
Tightening torque pigtail	0.6 Nm

Additional text

QUABBIN DATAMAX EXTREME HIGH FLEX INDUSTRIAL ETHERNET/IP PATCH
 CORD CAT 5e SF/UTP P/N 5025- C(UL)US TYPE CMX OUTDOOR- CM 2 PR 24 AWG
 75C SUN RES OR AWM 2463 -RoHS



- 1) Shielded knurl
 2) Shield on housing

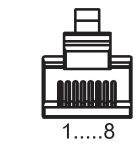
Connector/cable

BCC M414-E894-8G-672-ES64N9-010

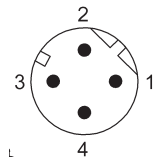
Order code: BCC0E91

BALLUFF

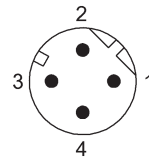
sensors worldwide



II



L
I



I