

- Female M12
- Male RJ45
- straight / straight

General attributes

Cable jacket color teal
Enclosure Type per IEC 60529 IP67 / IP20

Electrical attributes

Bus system Industrial ETHERNET
Operating voltage UB max. AC [V] 60.0 V
Operating voltage UB max. DC [V] 60.0 V
Switching output No
Transfer impedance ≤ 100 +/- 15 Ω

Mechanical attributes

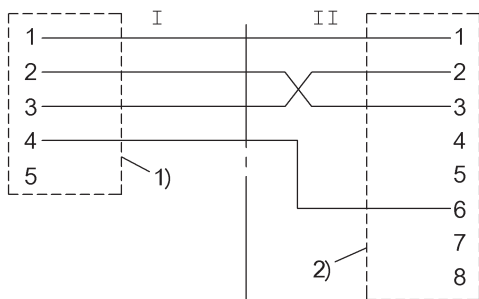
Cable diameter D 6.35 +/- 0.25 mm
Cable jacket material TPE shielded
Cable length L [m] 5.00 m
Cable temperature max. 80 °C
Conductor cross-section 24 AWG
Conductor structure 2x2 twisted pairs

Connector configuration

Connector type straight / straight
Connector type (Header I) M12x1 / RJ45
Connector type (Header II) Female M12
Contact material Male RJ45
Cover nut material CuZn / CuSn
Grip material GD-Zn / -
Number of conductors PUR / PA6.6
Number of female/male pins 4
Stranding 5 / 8
System Twisted pair
Tightening torque pigtail molded / assembled
0.6 Nm / -

Additional text

Enclosure type accord. to IEC 60529, when threaded together with the appropriate counterpart.
Halogen-free
Cable structure according to UL-AWM Style 20626



- 1) Shielded knurl
2) Shield on housing

