

- Female M12
- Male RJ45
- straight / straight

General attributes

Cable jacket color teal
 Enclosure Type per IEC 60529 IP67 / IP20

Electrical attributes

Bus system Industrial ETHERNET
 Operating voltage UB max. AC [V] 60.0 V
 Operating voltage UB max. DC [V] 60.0 V
 Switching output No
 Transfer impedance ≤ 100 +/- 15 Ω

Mechanical attributes

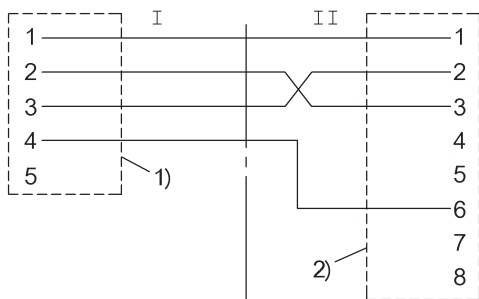
Cable diameter D 6.35 +/- 0.25 mm
 Cable jacket material TPE shielded
 Cable length L [m] 3.00 m
 Cable temperature max. 80 °C
 Conductor cross-section 24 AWG
 Conductor structure 2x2 twisted pairs

Connector configuration

Connector type straight / straight
 Connector type M12x1 / RJ45
 Connector type (Header I) Female M12
 Connector type (Header II) Male RJ45
 Contact material CuZn / CuSn
 Cover nut material GD-Zn / -
 Grip material PUR / PA6.6
 Number of conductors 4
 Number of female/male pins 5 / 8
 Stranding Twisted pair
 System molded / assembled
 Tightening torque pigtail 0.6 Nm / -

Additional text

Enclosure type accord. to IEC 60529, when threaded together with the appropriate counterpart.
 Halogen-free
 Cable structure according to UL-AWM Style 20626



- 1) Shielded knurl
 2) Shield on housing

