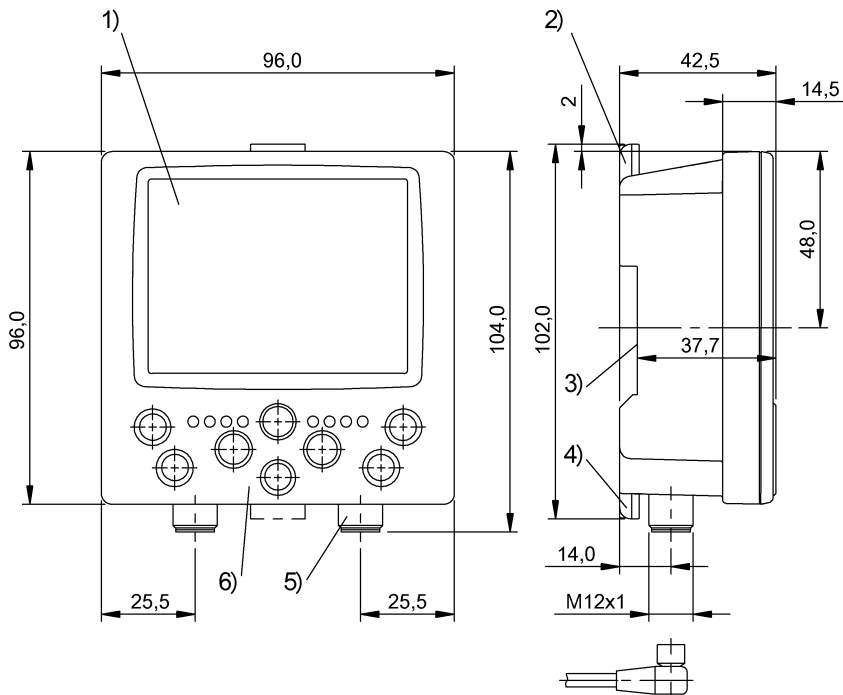


BAE PD-VS-002-E
BAE00EH



1) Color screen 3.5" 2) Latch 3) For DIN rail 35mm 4) Latch 5) Connection BVS/LAN 6) Display and control panel



Display/Operation

Adjuster	Key (8x)
Setting	User on/off User type Base/Advanced/ Administration Password prot. active/inactive Connect/disconnect sensor Language EN/IT/DE/FR Factory setting (Reset) Sensor data for network Inspection load/delete/save Trigger mode cont./extern. Visualization mode Screen parameters Tool parameters Inspection tool

Electrical connection

Connection	M12x1, 4-pole, A-coded
Connection slots	M12x1-Connector, 4-pole, D-coded
Polarity reversal protected	yes
Short-circuit protection	yes

Electrical data

Current draw max.	150 mA
-------------------	--------

Internet	www.balluff.com
Balluff Germany	+49 (0) 7158 173-0, 173-370
Balluff USA	1-800-543-8390
Balluff China	+86 (0) 21-50 644131

Operating voltage U_b	21.6...26.4 VDC
-------------------------	-----------------

Environmental conditions

Ambient temperature	-10...55 °C
EN 60068-2-27, Continuous shock load	yes
EN 60068-2-27, Shock	yes
EN 60068-2-6, Vibration	yes
Protection type IEC 60529	IP20
Storage temperature	-20...70 °C

General data

Approval/Conformity	CE
Function	Data transfer to/from PC Manage user profiles Manage sensor data Find sensors in the network Manage inspections Change inspections Display inspections
Scope of delivery	User's manual Ground connection (1x) Rubber gasket Plastic cap (2x) Mini-DVD PT-Screw $\varnothing 3 \times 27$ (2x) Programming Device
Series	PD-VS

For definitions of terms, see main catalog	eCl@ss 9.1: 27-33-01-90	1(3)
Subject to change without notice	ETIM 6.0:	
	BAE00EH_31-03-17_09:30	

BAE PD-VS-002-E BAE00EH

Short description	Vision Sensor Monitor	Fastening detail	Terminals on front panel DIN rail 35 mm
Use	for BVS ...-E		
Version	with color screen		

Material

Housing material	ABS
------------------	-----

Mechanical data

Dimension	96 x 104 x 42.5 mm
-----------	--------------------

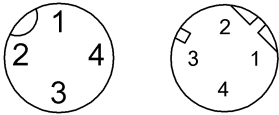
Output/Interface

Auxiliary interfaces	Ethernet 10/100 Base T
Interface	Ethernet 10/100 Base T

Range/Distance

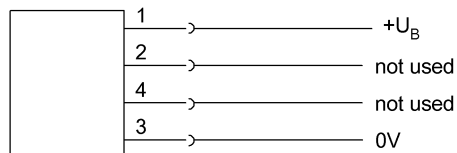
Residual ripple max.	2.0 Vpp
----------------------	---------

Connector view

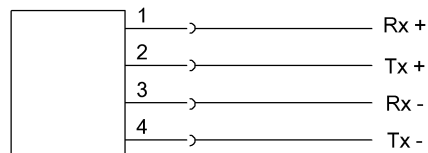


Wiring Diagram

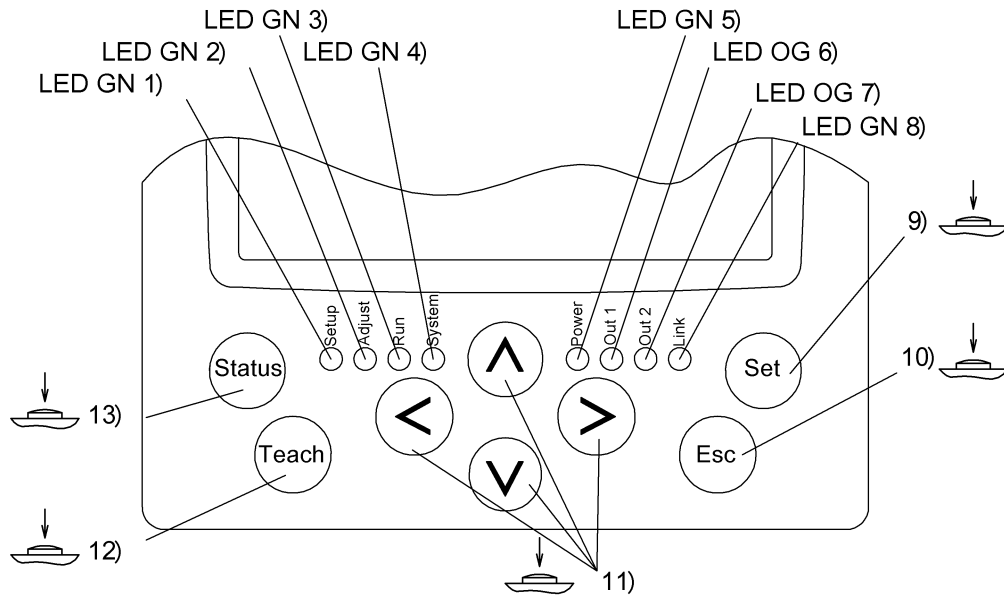
Conn. "PWR"



Conn. "ETH/LAN"



Additional View



- | | | | | | |
|-----------------------------|--------------------|-------------------------------|--------------------|--------------------------|---------------------|
| 1) Sensor search active | 2) Setup menu | 3) Monitor mode | 4) System menu | 5) Operating voltage | 6) Output 1 |
| back | 7) Output 2 active | 8) Connection with sensor/LAN | 9) Confirm setting | 10) Cancel setting, back | 11) Set, change ROI |
| 13) System menu, statistics | 12) Save setting, | | | | |